

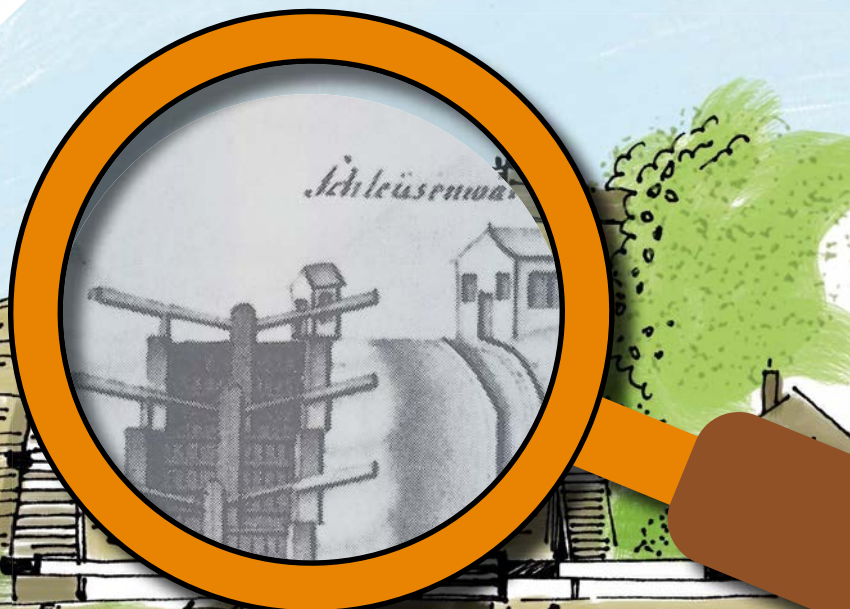
# Be a Canal Spy!!

At Bingley Five Rise Locks

Your mission is to solve the mystery of the Bingley Five Rise Locks.

Use your best detective skills to solve the puzzle. **Why did Johann Hogrewe come all the way from Prussia (Germany) to draw the Bingley Five Rise Locks?**

Look for clues and help Brian and David solve the mystery. **Good Luck!!**



First of all you need to use your powers of observation and record all your findings in your spy notebook.

... remember, if you are discovered you may need to destroy it!!



**My Spy Note Book**

ssshhhhhh...



Agent: \_\_\_\_\_

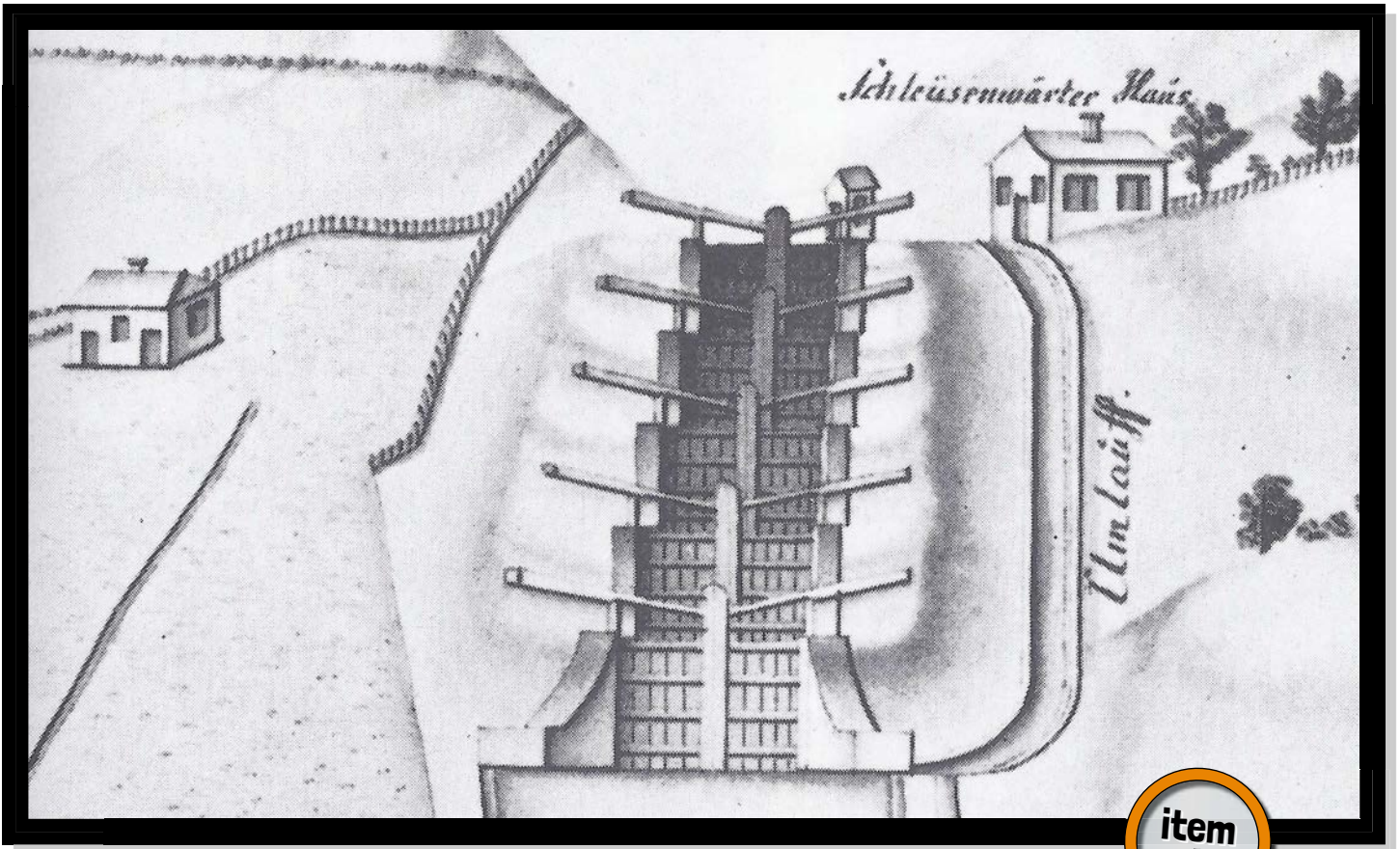
Date of mission: \_\_\_\_\_

Visit us online at [canalriverexplorers.org.uk](http://canalriverexplorers.org.uk)

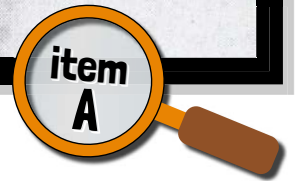
Always remember to stay **SAFE** near water – **Stay Away From the Edge.**



# Resources:



Johann Hogrewe's 200 year old drawing of Bingley Five Rise Locks

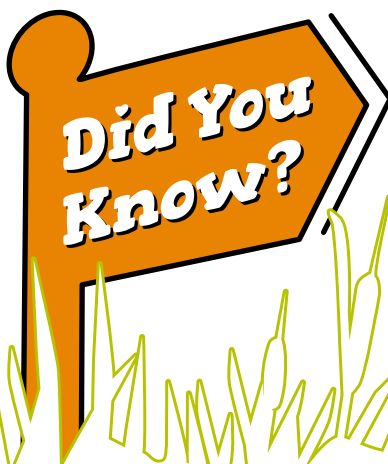


**Q1. What do you think "Schleusenwärter Haus" means?**

I think it means: \_\_\_\_\_

Stand on the towpath at the bottom of the Five Rise Locks and look up.

**Q2. Do you think this is an accurate drawing?** YES NO



Johann came over from Prussia (modern Germany) to draw the latest modern engineering features of the canals.

Brian says:

Bingley Five Rise Locks are a wonder of the waterways.

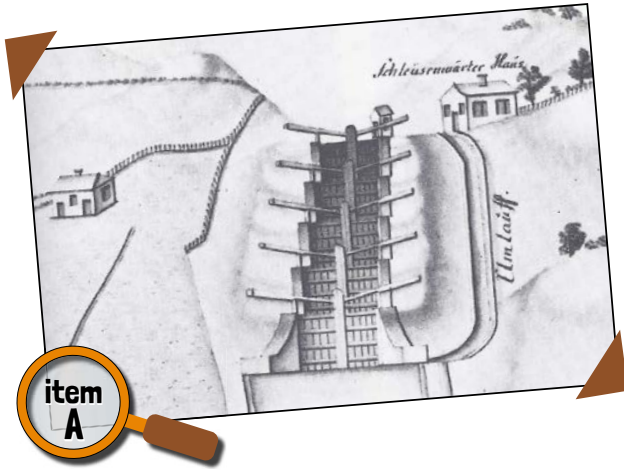


# Task 1: Looking For Clues

**Q3. What features can you see in Johann's 200 year old drawing of Bingley Five Rise Locks that are still here today?**

**Q4. How is it different from today?**

**Q5. What has he got wrong?**



Here's a clue, count the number of lock gates at Bingley Five Rise Locks. Compare it to your plan, the aerial photo, and what you can see on the ground.

David says:



I found out that:

---

---

---

---

---

---

---

---

---

---

---

---

---

---

---

---

---

---

---

---

---

---

---

---

**Can you spot the:**

- Beams for opening and closing the lock gates
- Lock keeper's house
- Five Rise farmhouse
- Overflow channel (by wash)
- Lock gates
- Side walls at the bottom of the locks

Create a key to mark them on the drawing.

**Intelligence report:**

use the resources sheet to look at a larger version of the map



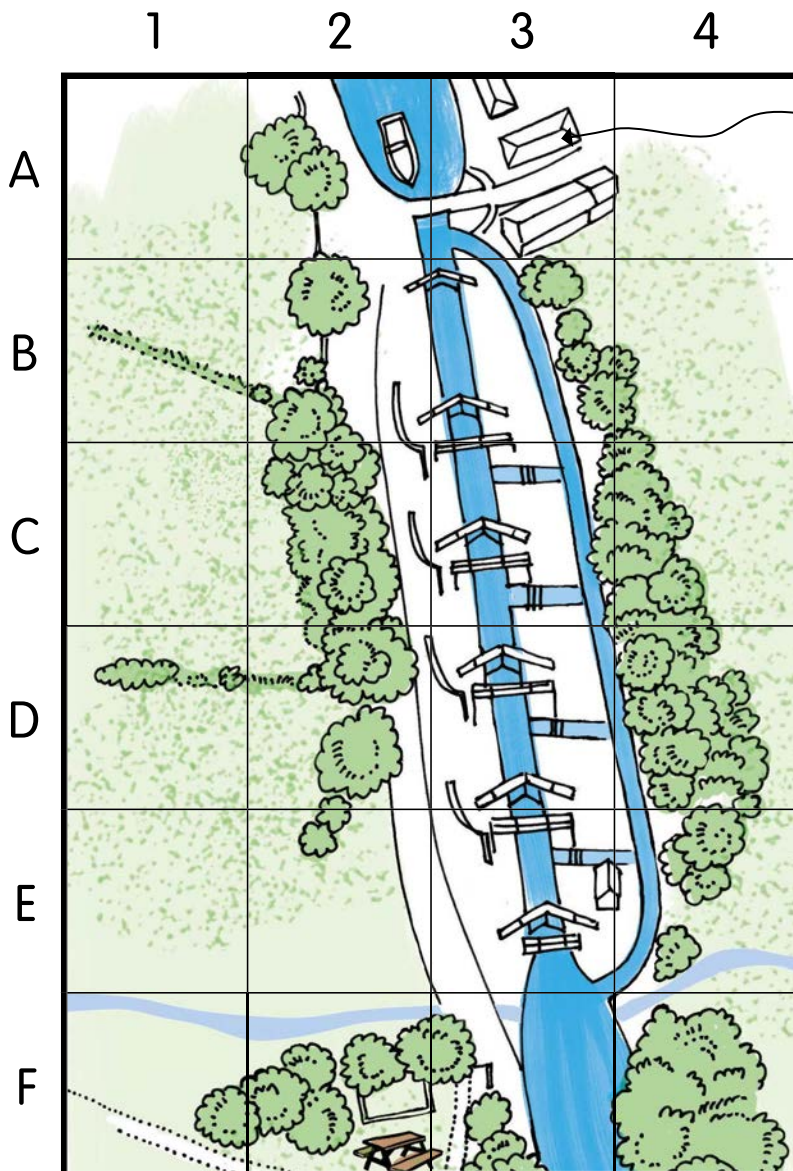
# Task 2: Make a Large Spy Map

## A. Draw an enlarged map of the Five Rise Locks using the grid squares.

Copy and enlarge the map, copying square by square.

Here's a clue, use the numbers and letters to find the right square. Do your drawing in pencil first (just in case you go wrong) then colour in afterwards.

Brian says:



David and Brian's cottage

## B. When you have made a copy, use a key to label these on the map:

- The overflow channel (by wash)
- The stables / café
- The lock keeper's house
- The footbridges over the lock chambers
- The beams for opening and closing the lock gates
- The white fence beside the locks
- The old blacksmiths forge



Agent: \_\_\_\_\_

## Task 2: Make a Large Spy Map

	1	2	3	4
A				
B				
C				
D				
E				
F				

Copy and enlarge the map on the previous sheet, copying square by square.

Brian says:



Now you've got the hang of it how about trying something really difficult?

... **take a look at the next sheet**

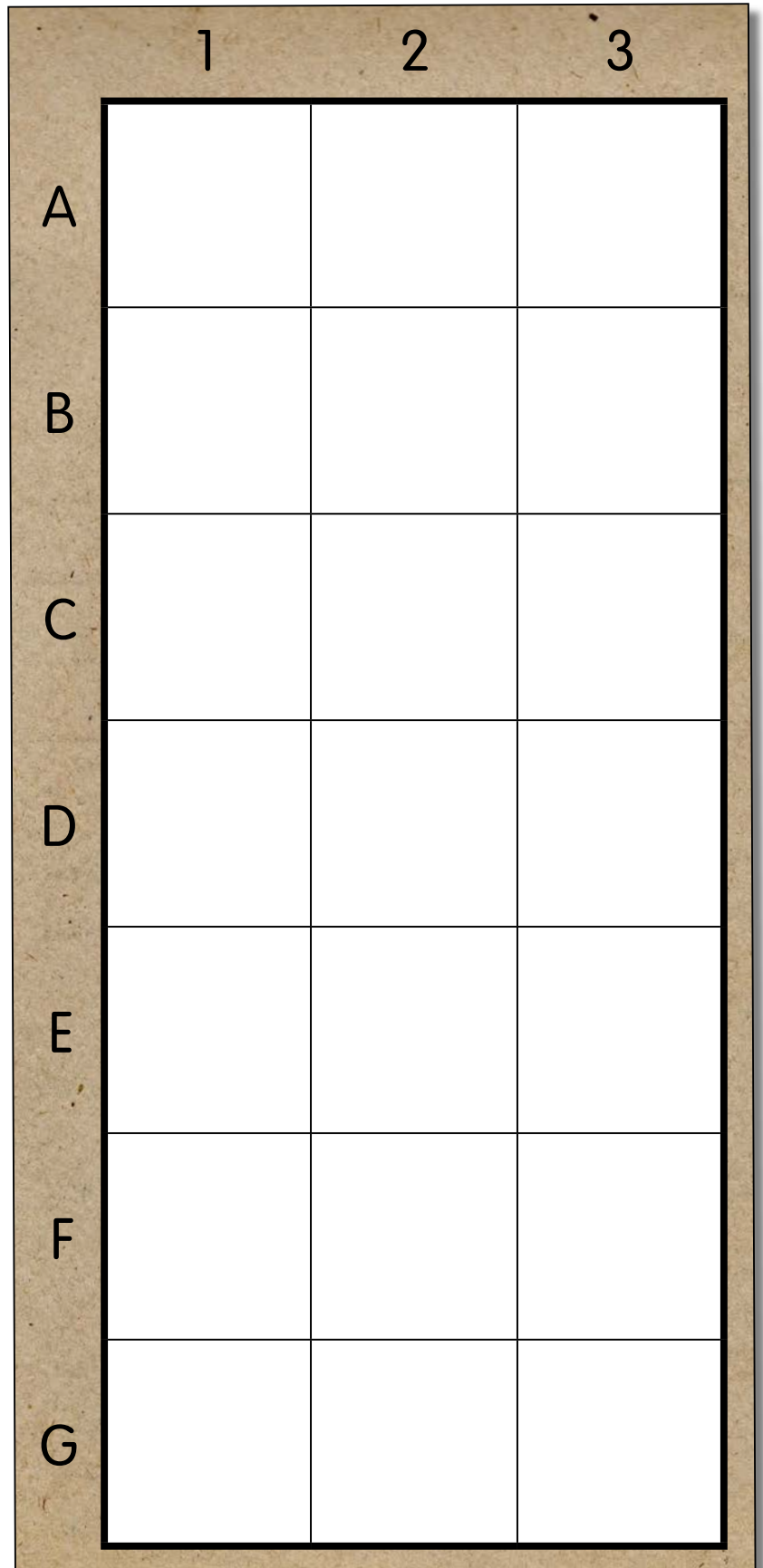
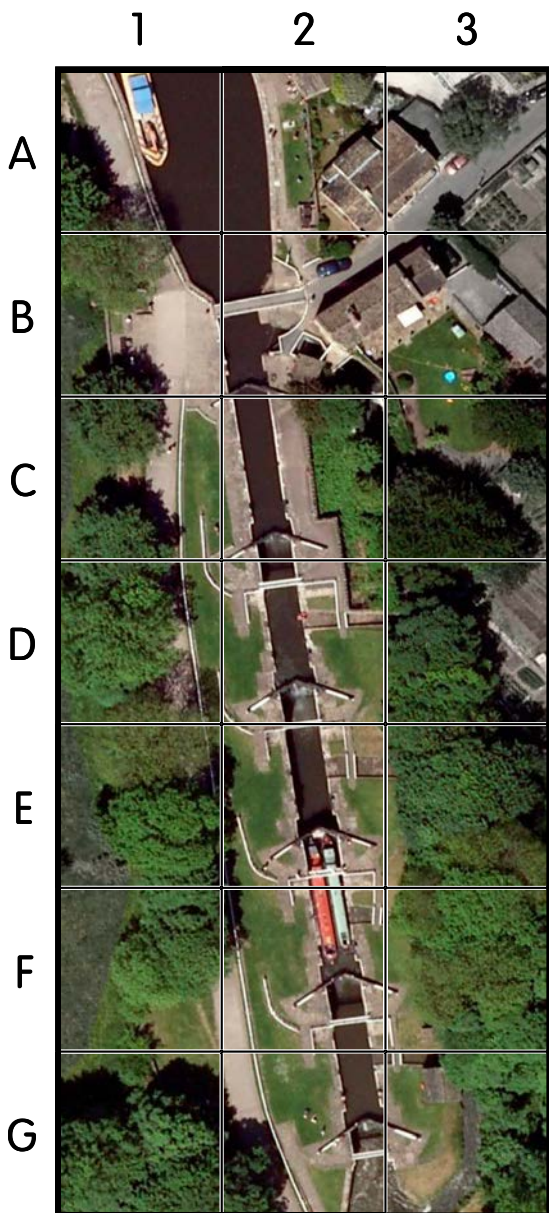


Agent: \_\_\_\_\_

# Task 3: Satellite Map

**Q6. How about making your own plan from this aerial photo of the Five Rise Locks?**

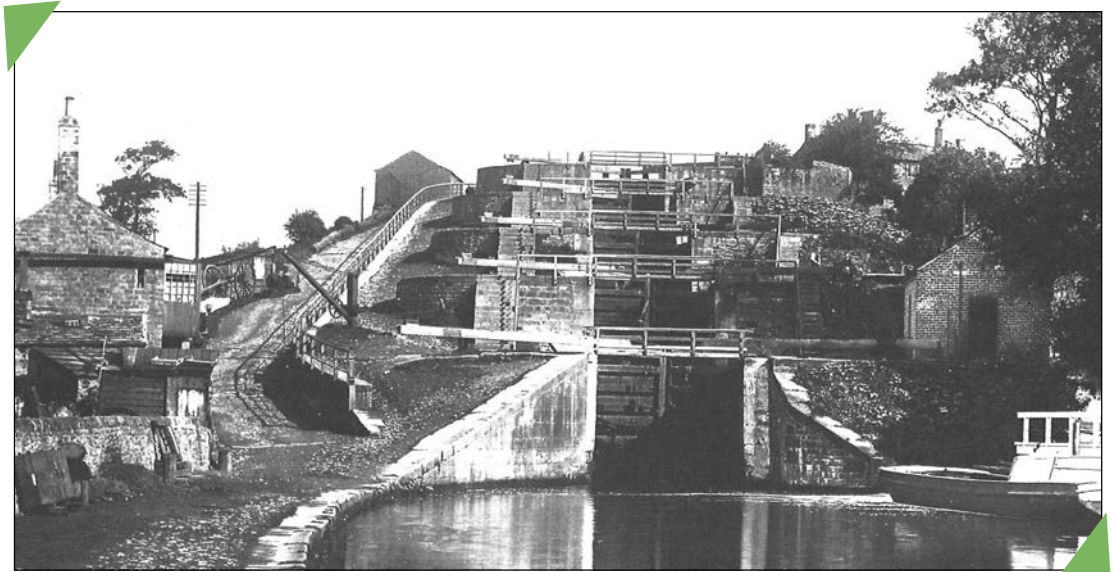
Using the grid squares, copy what you see in the photo in each square.



# Task 4: Five Rise Locks

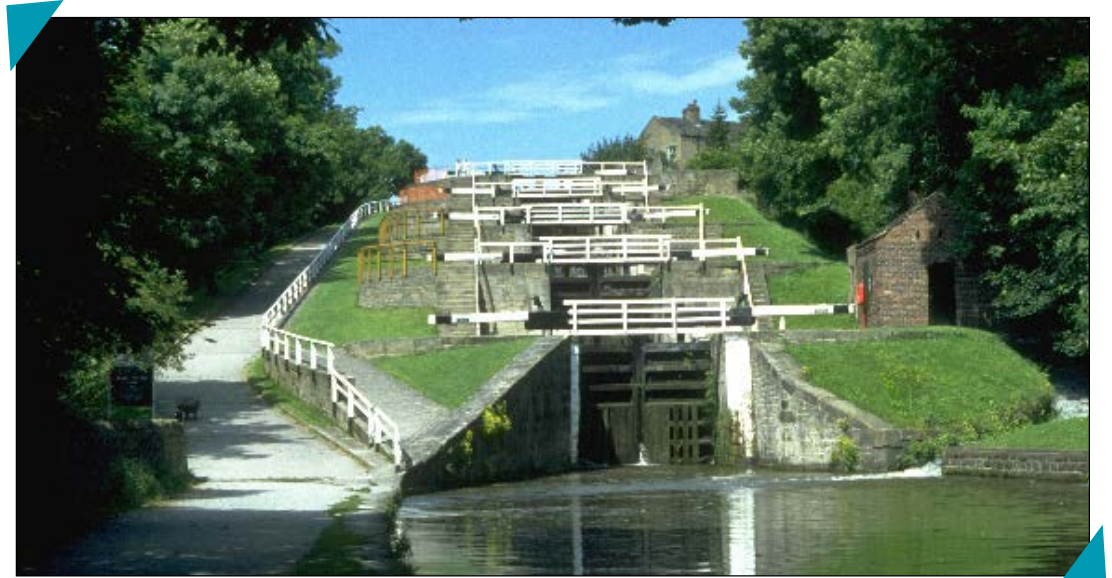
## Spot the differences

*If you are at the locks, take a walk around and see what is still there.*



**A.**

Bingley Five Rise Locks from around 1890.



**B.**

Bingley Five Rise Locks 2012.

**What is missing in the modern photo?**

- \_\_\_\_\_
- \_\_\_\_\_
- \_\_\_\_\_
- \_\_\_\_\_
- \_\_\_\_\_
- \_\_\_\_\_

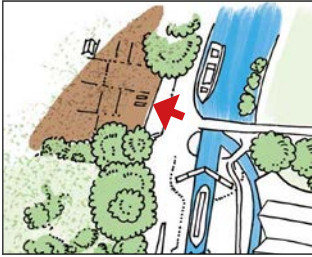
**What is still there from 100 years ago?**

- \_\_\_\_\_
- \_\_\_\_\_
- \_\_\_\_\_
- \_\_\_\_\_
- \_\_\_\_\_
- \_\_\_\_\_



# Task 5: Five Rise Locks

## Spot the differences



The Three Rise Lock Keeper's Cottage was demolished in the 1950s.

*Look carefully at the old stone wall between the allotments and the top of the locks.*

*Can you see stones sticking out?*

*This used to be the back wall of the cottage.*

**A.**



Bingley Three Rise Locks and Lock Keeper's Cottage around 1930.

**B.**



Bingley Three Rise Locks 2012 (note blocked windows on white building).

**What is missing in the modern photo?**

- \_\_\_\_\_
- \_\_\_\_\_
- \_\_\_\_\_
- \_\_\_\_\_
- \_\_\_\_\_
- \_\_\_\_\_

**What is still there from 80 years ago?**

- \_\_\_\_\_
- \_\_\_\_\_
- \_\_\_\_\_
- \_\_\_\_\_
- \_\_\_\_\_
- \_\_\_\_\_





# Task 6: Caring for the Locks

## Now and Then

Skilled craftsmen built the locks and repaired them to stop leaks and keep them in good working order.

The machinery and health and safety rules have changed a lot over the years.

They still have to drain the water out to work in the locks and still use the same skills.

**Can you spot the differences?**

A.



The maintenance team pose in the empty Five Rise Locks in 1912.

### Things to look for:

- Scaffolding
- Ladders
- Planks
- Bowler hats
- Suits and ties
- Protective boots
- Safety jackets
- Sitting on the edge of the lock chamber

B.



The maintenance team pose in the empty Five Rise Locks in 2012.

**How many differences can you see between the photos in 1912 and 2012?**

● \_\_\_\_\_

● \_\_\_\_\_

● \_\_\_\_\_

● \_\_\_\_\_

● \_\_\_\_\_

● \_\_\_\_\_

● \_\_\_\_\_

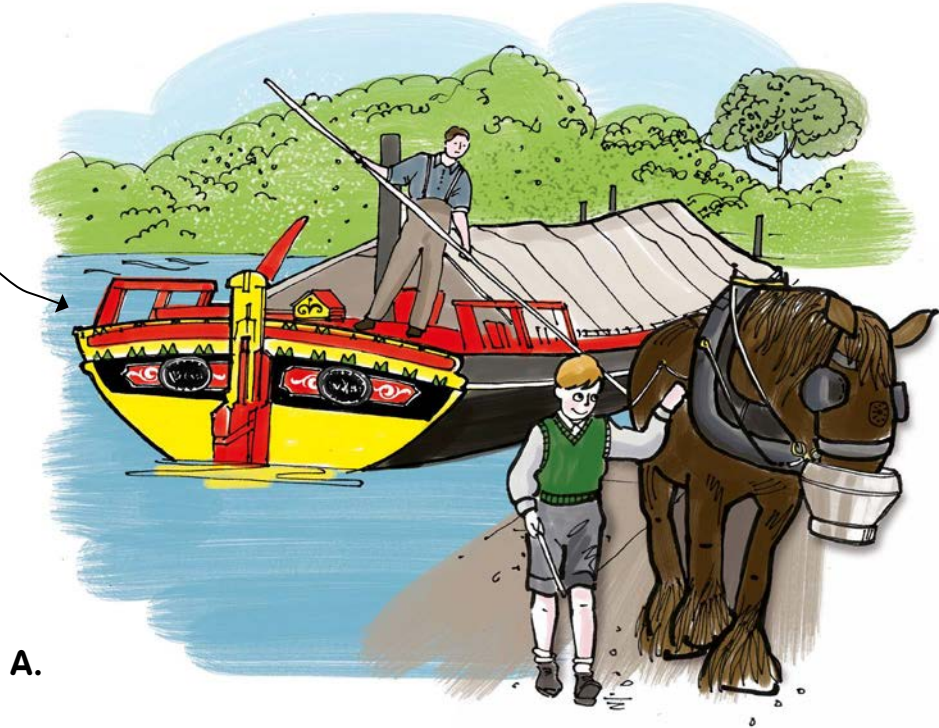


# Task 7: Horse Boats

## Spot the differences

Using your powers of observation, can you spot five differences between the pictures?

Leeds & Liverpool Canal  
Short Boat



Agent:  
\_\_\_\_\_

# Task 8: Crack The Spy Code

Work out this secret message sent by Johann Hogrewe.

First, fill in the missing letters using his number code to help you, then work out the secret message!

Johann Hogrewe's secret code:

A	B	C	D	E	F	G	H	I	J	K	L	M	
9	4				22	15			6	7			
N	O	P	Q	R	S	T	U	V	W	X	Y	Z	:)
				14					8	3		0	

4                    15                    22                    14

                          7                    9                    9                    8    14

22                                                          8                    14                    8

    6                    9                    3                    3                    0

Q7. What would you say about Bingley Five Rise?

\_\_\_\_\_

\_\_\_\_\_

\_\_\_\_\_

\_\_\_\_\_

\_\_\_\_\_

\_\_\_\_\_

\_\_\_\_\_

\_\_\_\_\_

\_\_\_\_\_

\_\_\_\_\_

\_\_\_\_\_

**MISSION COMPLETE**

Congratulations you've solved the mystery!

# Bingley Locks i-Spy

## Special Mission - to be carried out at Bingley Five Rise Locks

**Canal Spotters** a game for two players. The winner is the first one to tick all of his or her boxes. To score bonus points mark these features on your plans.

**Remember:** Don't run around by the water's edge and always remember to stay **SAFE** near water – Stay Away From Edge.



A Canal Boat

Player 1    Player 2



The Lock Keeper

Player 1    Player 2



The Five Rise Locks

Player 1    Player 2



A QR Code Sign

Player 1    Player 2



Ground Box Paddle

Player 1    Player 2



The Old Stables

Player 1    Player 2



The Three Rise Locks

Player 1    Player 2



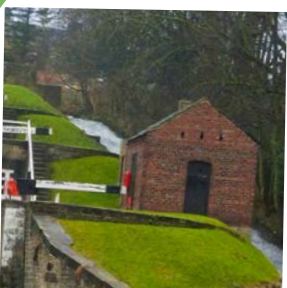
The Old Lock Keeper's House

Player 1    Player 2



A Milepost

Player 1    Player 2



The Old Blacksmith's Forge

Player 1    Player 2



The Lock Gate Balance Beam

Player 1    Player 2



Red Plaque

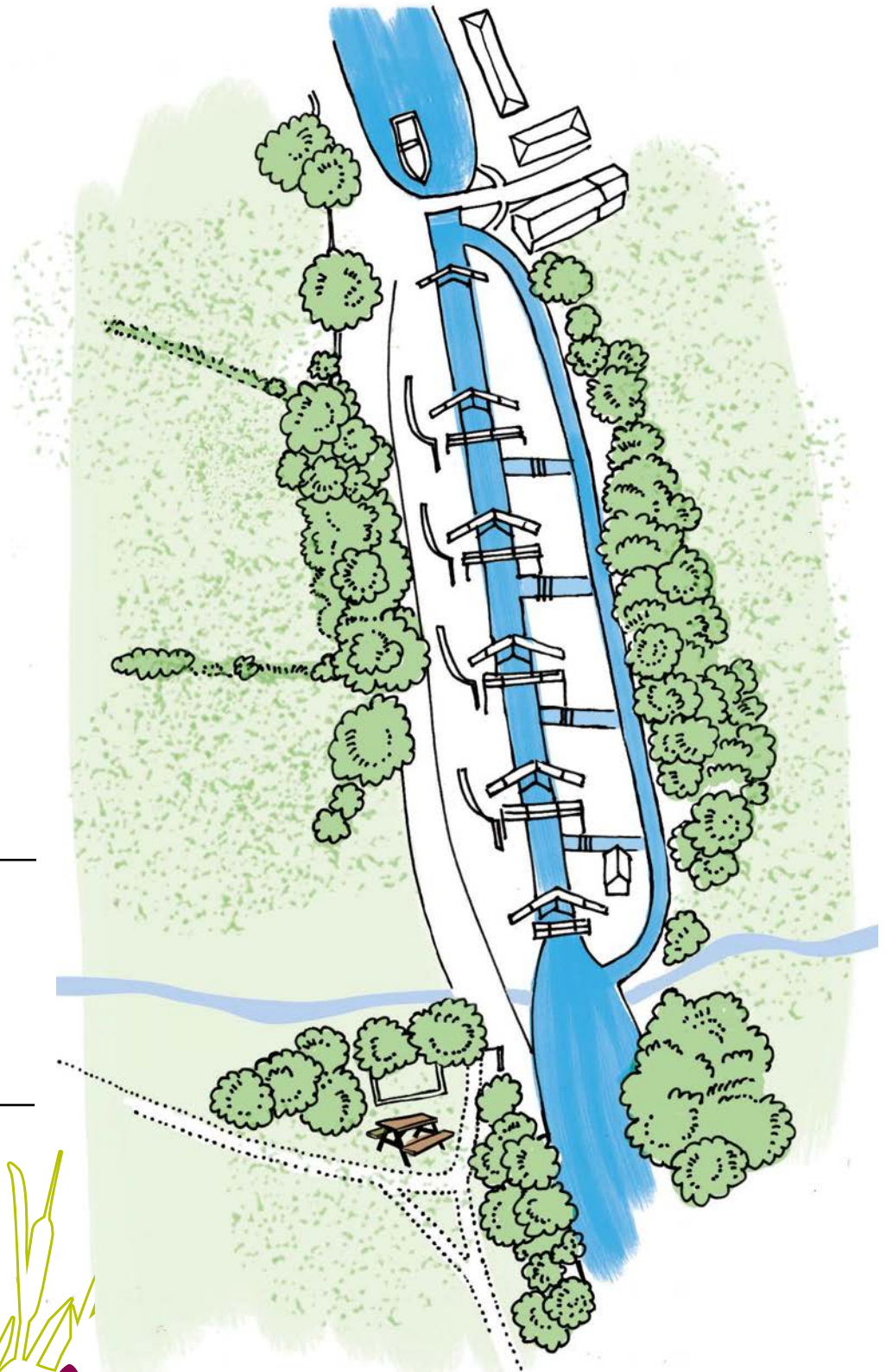
Player 1    Player 2



# i-Spy Map 1

## This is your map of Bingley Five Rise Locks

Record where you have been and what you have seen!



**This map belongs to**

Name:  
\_\_\_\_\_

**I explored the Bingley  
Five Rise Locks on**

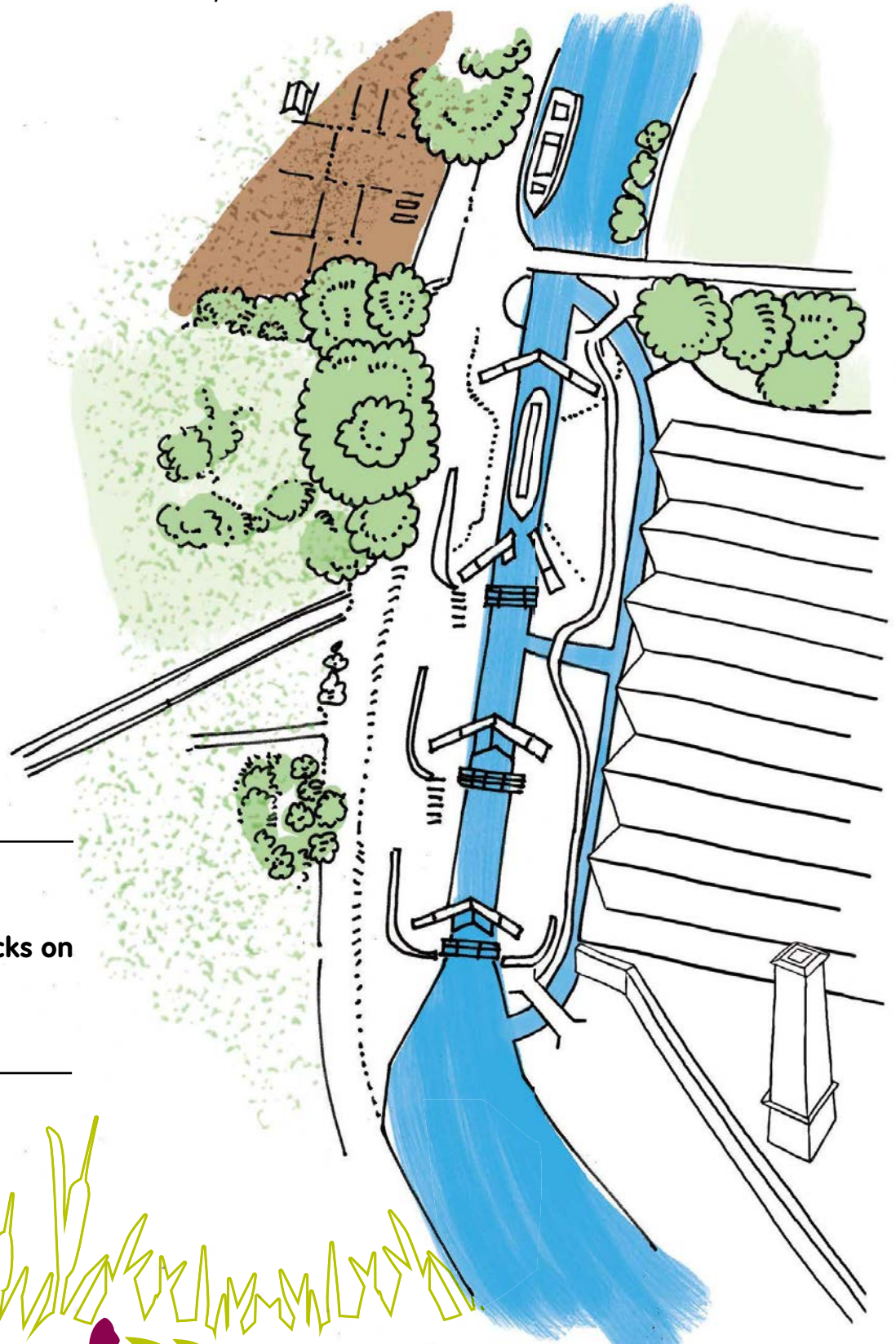
Date:  
\_\_\_\_\_



# i-Spy Map 2

## This is your map of Bingley Three Rise Locks

Record where you have been and what you have seen!



**This map belongs to**

Name:

\_\_\_\_\_

**I Explored the  
Bingley Three Rise Locks on**

Date:

\_\_\_\_\_

